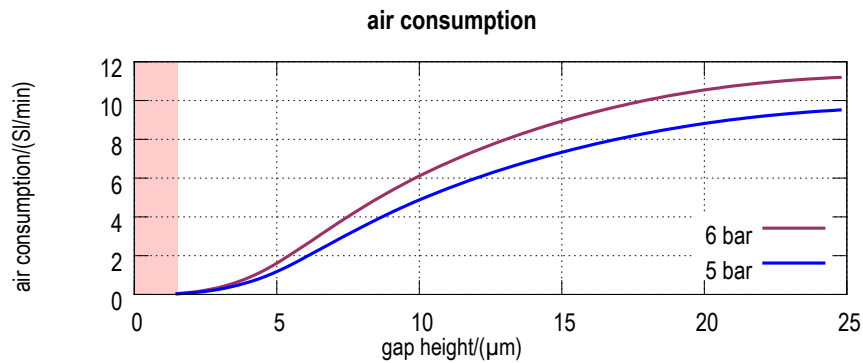
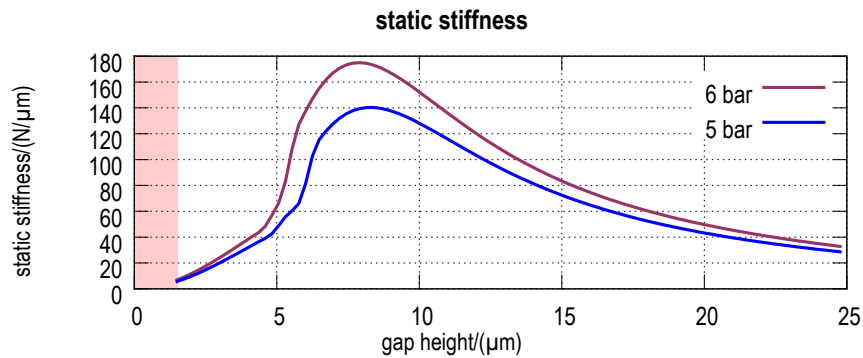
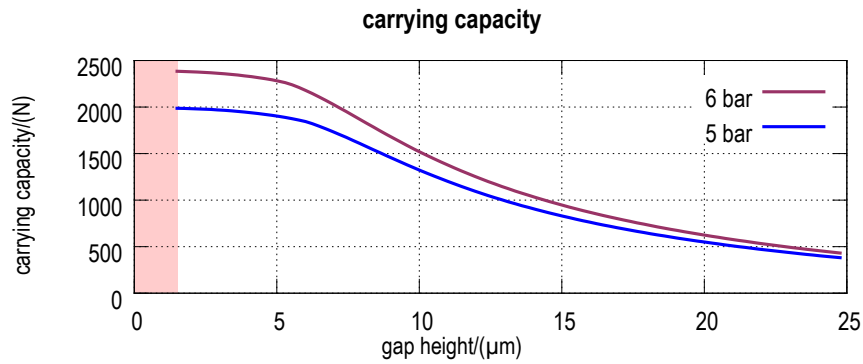
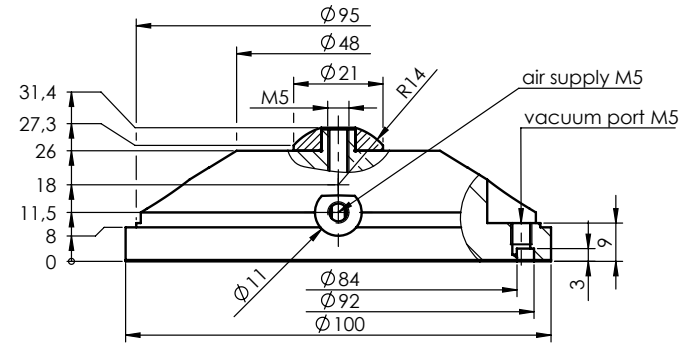


# EZ-0300-100 Air Bearing with Air Extraction



■ = Mixed friction range



Additional air-extraction system.  
Thermodynamically optimised air cushion by micro groove system.<sup>1\*</sup>  
Bearing surface with dry running coating.

Air supply pressure <sup>2*</sup> / (bar <sub>rel</sub> )	5	6
Maximum carrying capacity / (N)	1980	2380
Nominal carrying capacity / (N)	1140	1300
Gap height <sup>3*</sup> / (µm)	11.5	11.5
Static stiffness <sup>3*</sup> / (N/µm)	109	127
Air consumption <sup>3*</sup> / (l/min)	5.8	7.1
Maximum velocity <sup>3*</sup> / (m/s)	5	6
Bearing weight (aluminium) / (g)	410	
Air supply thread	M5	
Adapted with centre screw	EZ-0249 M24x1.5-R14	

<sup>1\*</sup> Patents: US 6,164,827, DE 199 18 564 A1

<sup>2\*</sup> Different supply pressure on request

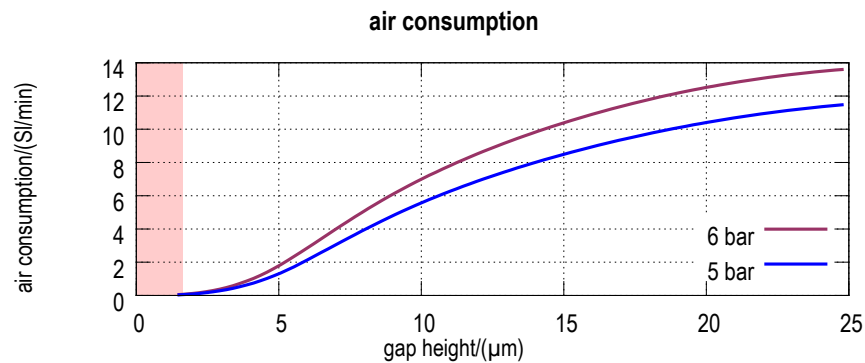
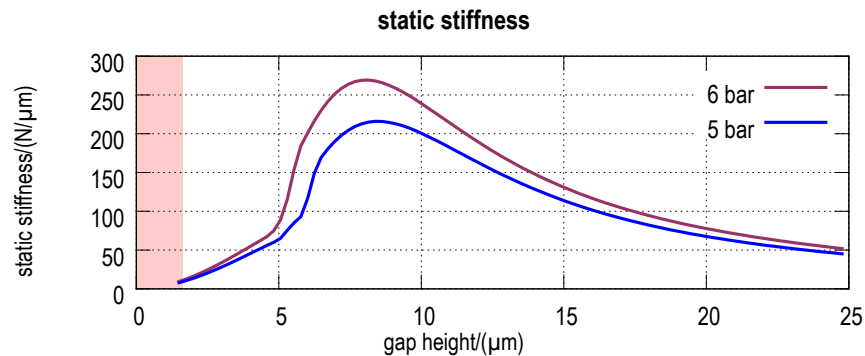
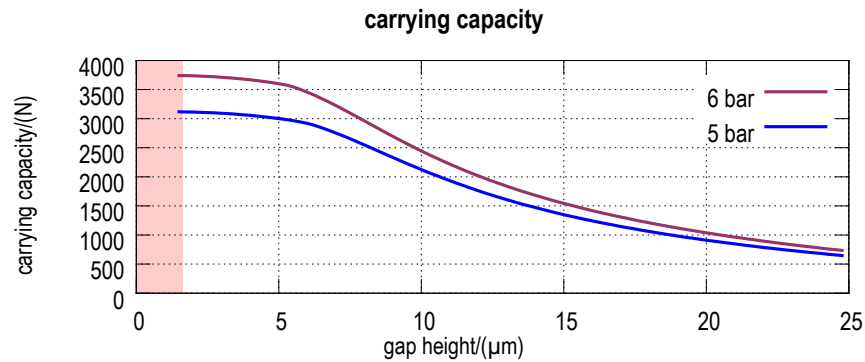
<sup>3\*</sup> at nominal carrying capacity

For specifications of guide surface, air quality requirements and gap definition see last pages of the [catalogue](#).

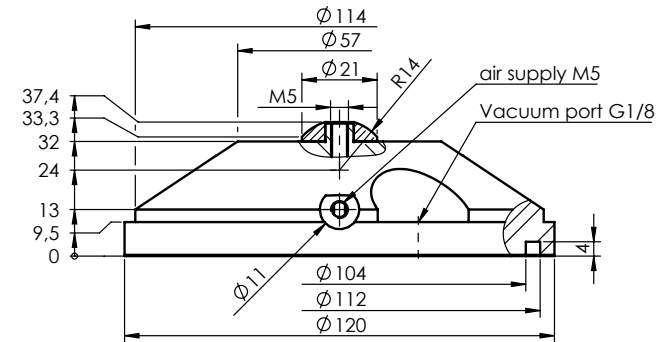
General information about design and function of our air bearings is available on our [website](#).

Status 08/2016

# EZ-0300-120 Air Bearing with Air Extraction



■ = Mixed friction range



Additional air-extraction system.  
Thermodynamically optimised air cushion by micro groove system.<sup>1\*</sup>  
Bearing surface with dry running coating.

Air supply pressure <sup>2*</sup> / (bar <sub>rel</sub> )	5	6
Maximum carrying capacity / (N)	3110	3740
Nominal carrying capacity / (N)	1820	2080
Gap height <sup>3*</sup> / (µm)	11.6	11.6
Static stiffness <sup>3*</sup> / (N/µm)	170	198
Air consumption <sup>3*</sup> / (l/min)	6.7	8.3
Maximum velocity <sup>3*</sup> / (m/s)	5	6
Bearing weight (aluminium) / (g)	710	
Air supply thread	M5	
Adapted with centre screw	EZ-0249 M24x1.5-R14	

<sup>1\*</sup> Patents: US 6,164,827, DE 199 18 564 A1

<sup>2\*</sup> Different supply pressure on request

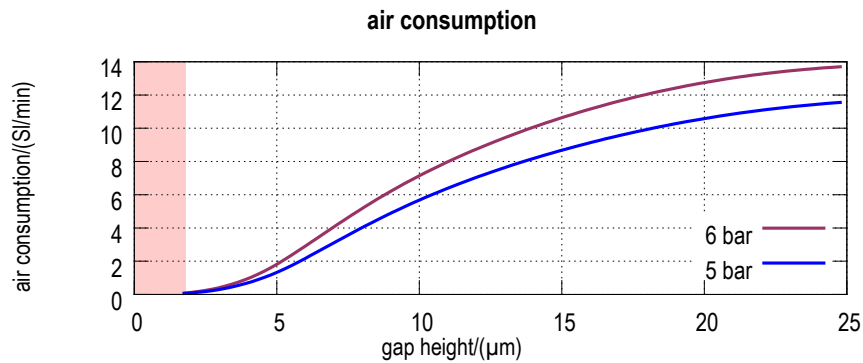
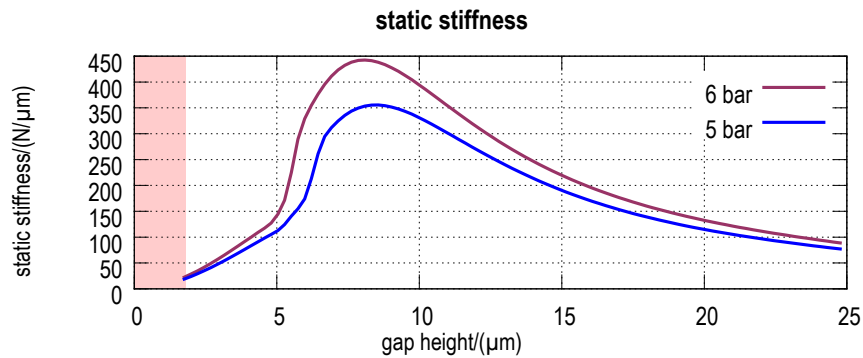
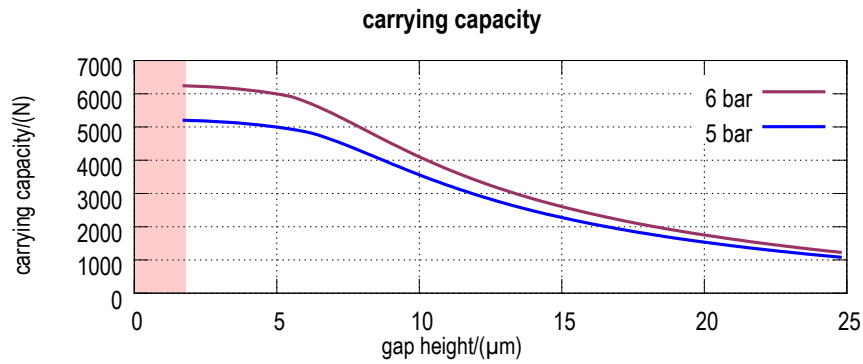
<sup>3\*</sup> at nominal carrying capacity

For specifications of guide surface, air quality requirements and gap definition see last pages of the [catalogue](#).

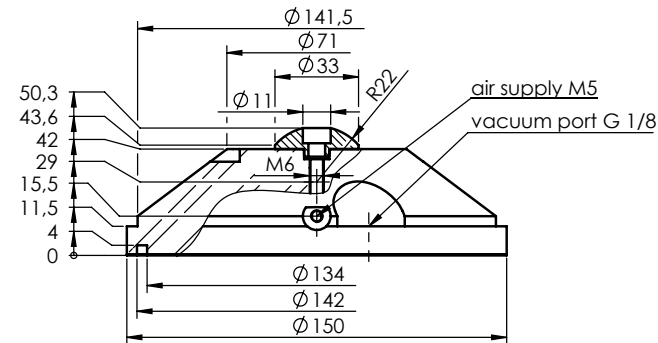
General information about design and function of our air bearings is available on our [website](#).

Status 08/2016

# EZ-0300-150 Air Bearing with Air Extraction



■ = Mixed friction range



Additional air-extraction system.  
Thermodynamically optimised air cushion by micro groove system.<sup>1\*</sup>  
Bearing surface with dry running coating.

Air supply pressure <sup>2*</sup> / (bar <sub>rel</sub> )	5	6
Maximum carrying capacity / (N)	5150	6200
Nominal carrying capacity / (N)	3010	3450
Gap height <sup>3*</sup> / (µm)	11.8	11.8
Static stiffness <sup>3*</sup> / (N/µm)	276	322
Air consumption <sup>3*</sup> / (l/min)	6.9	8.6
Maximum velocity <sup>3*</sup> / (m/s)	5	6
Bearing weight (aluminium) / (g)	1440	
Air supply thread	M5	
Adapted with centre screw	EZ-0249 M36x1.5-R22	

<sup>1\*</sup> Patents: US 6,164,827, DE 199 18 564 A1

<sup>2\*</sup> Different supply pressure on request

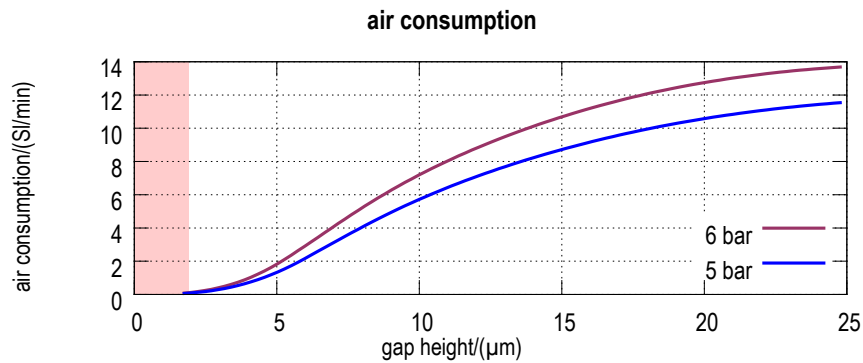
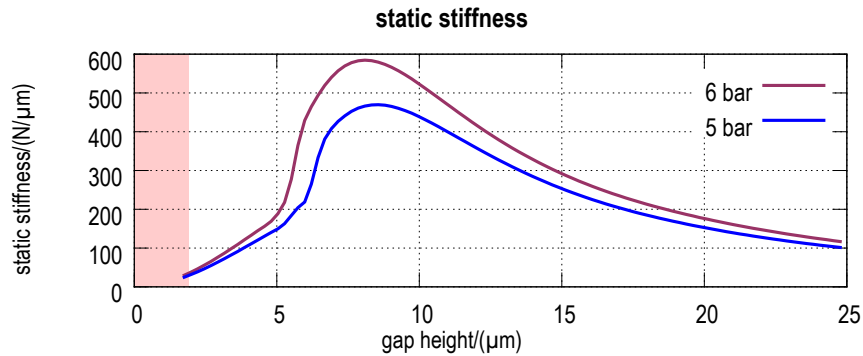
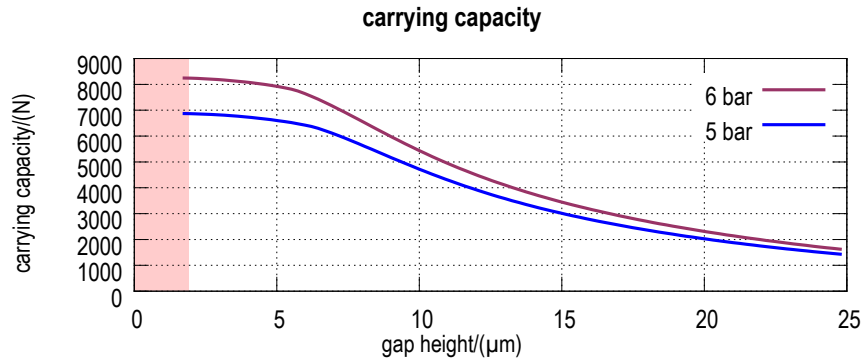
<sup>3\*</sup> at nominal carrying capacity

For specifications of guide surface, air quality requirements and gap definition see last pages of the [catalogue](#).

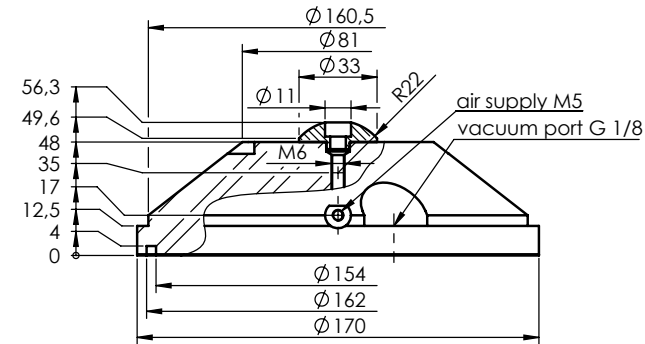
General information about design and function of our air bearings is available on our [website](#).

Status 08/2016

# EZ-0300-170 Air Bearing with Air Extraction



■ = Mixed friction range



Additional air-extraction system.  
Thermodynamically optimised air cushion by micro groove system.<sup>1\*</sup>  
Bearing surface with dry running coating.

Air supply pressure <sup>2*</sup> / (bar <sub>rel</sub> )	5	6
Maximum carrying capacity / (N)	6850	8200
Nominal carrying capacity / (N)	3950	4540
Gap height <sup>3*</sup> / (µm)	11.9	11.9
Static stiffness <sup>3*</sup> / (N/µm)	362	422
Air consumption <sup>3*</sup> / (l/min)	7	8.7
Maximum velocity <sup>3*</sup> / (m/s)	5	6
Bearing weight (aluminium) / (g)	2100	
Air supply thread	M5	
Adapted with centre screw	EZ-0249 M36x1.5-R22	

<sup>1\*</sup> Patents: US 6,164,827, DE 199 18 564 A1

<sup>2\*</sup> Different supply pressure on request

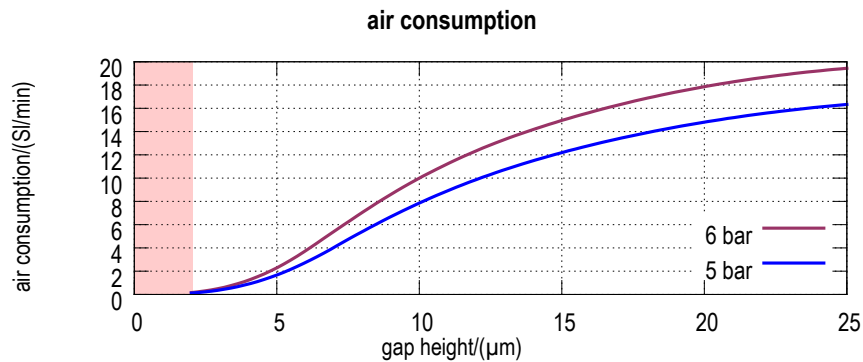
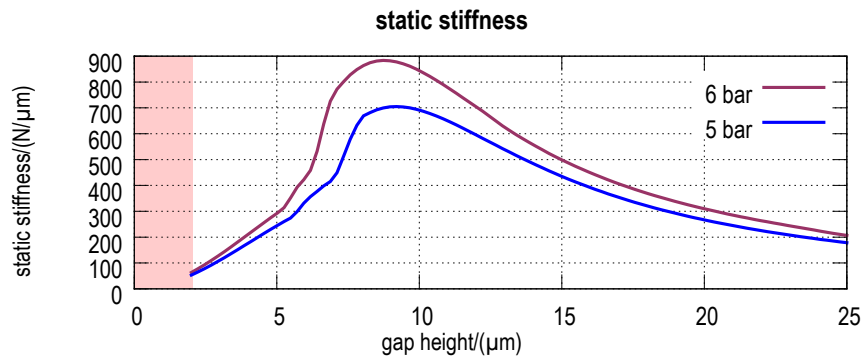
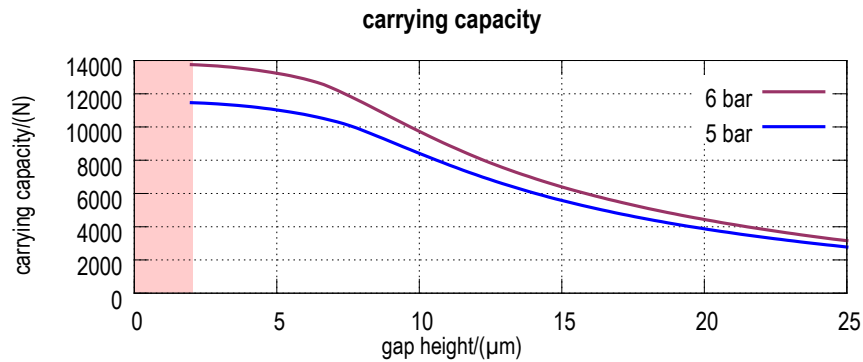
<sup>3\*</sup> at nominal carrying capacity

For specifications of guide surface, air quality requirements and gap definition see last pages of the [catalogue](#).

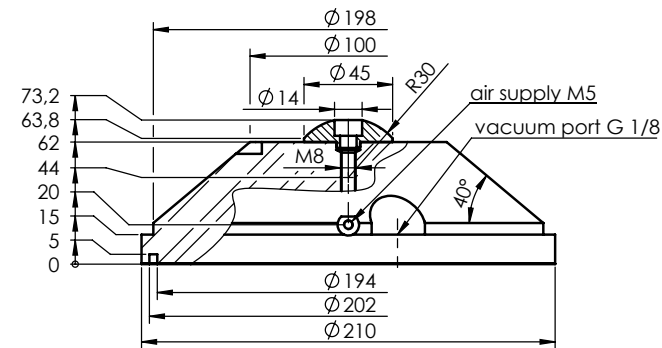
General information about design and function of our air bearings is available on our [website](#).

Status 08/2016

# EZ-0300-210 Air Bearing with Air Extraction



■ = Mixed friction range



Additional air-extraction system.  
Thermodynamically optimised air cushion by micro groove system.<sup>1\*</sup>  
Bearing surface with dry running coating.

Air supply pressure <sup>2*</sup> / (bar <sub>rel</sub> )	5	6
Maximum carrying capacity / (N)	11400	13700
Nominal carrying capacity / (N)	7050	8100
Gap height <sup>3*</sup> / (µm)	12.1	12.1
Static stiffness <sup>3*</sup> / (N/µm)	590	695
Air consumption <sup>3*</sup> / (l/min)	9.9	12.4
Maximum velocity <sup>3*</sup> / (m/s)	5	6
Bearing weight (aluminium) / (g)	4122	
Air supply thread	M5	
Adapted with centre screw	EZ-0249 M48x1.5-R30	

<sup>1\*</sup> Patents: US 6,164,827, DE 199 18 564 A1

<sup>2\*</sup> Different supply pressure on request

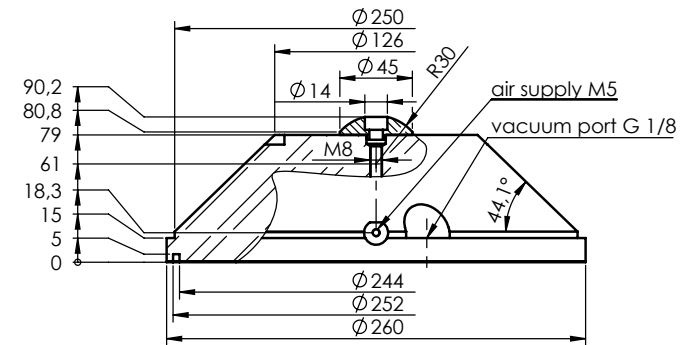
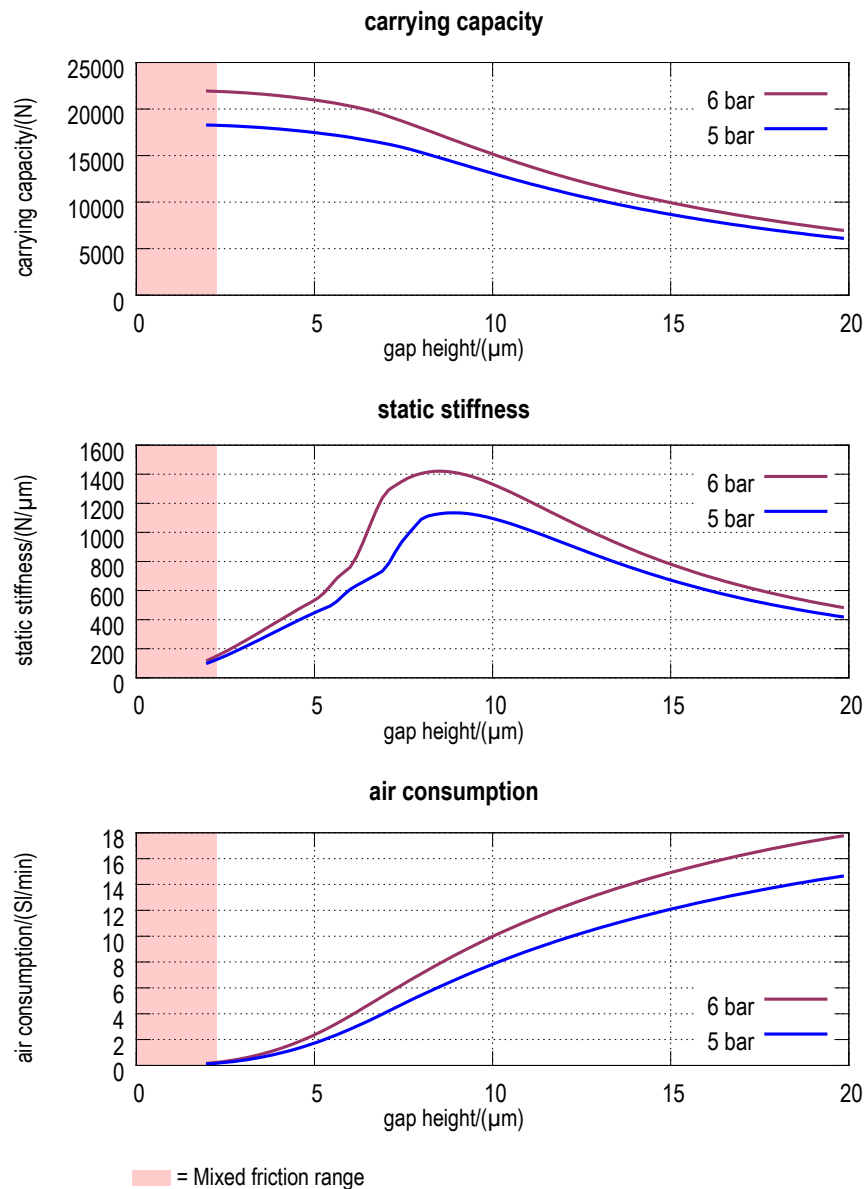
<sup>3\*</sup> at nominal carrying capacity

For specifications of guide surface, air quality requirements and gap definition see last pages of the [catalogue](#).

General information about design and function of our air bearings is available on our [website](#).

Status 08/2016

# EZ-0300-260 Air Bearing with Air Extraction



Additional air-extraction system.  
Thermodynamically optimised air cushion by micro groove system.<sup>1\*</sup>  
Bearing surface with dry running coating.

Air supply pressure <sup>2*</sup> / (bar <sub>rel</sub> )	5	6
Maximum carrying capacity / (N)	18200	21900
Nominal carrying capacity / (N)	10800	12400
Gap height <sup>3*</sup> / (μm)	12.3	12.3
Static stiffness <sup>3*</sup> / (N/μm)	900	1060
Air consumption <sup>3*</sup> / (l/min)	10	12.5
Maximum velocity <sup>3*</sup> / (m/s)	5	6
Bearing weight (aluminium) / (g)	7843	
Air supply thread	M5	
Adapted with centre screw	EZ-0249 M48x1.5-R30	

<sup>1\*</sup> Patents: US 6,164,827, DE 199 18 564 A1

<sup>2\*</sup> Different supply pressure on request

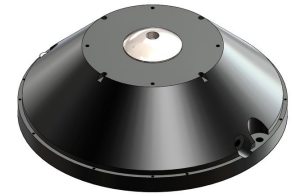
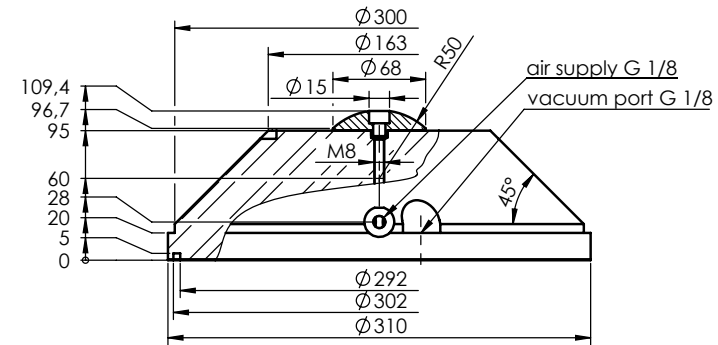
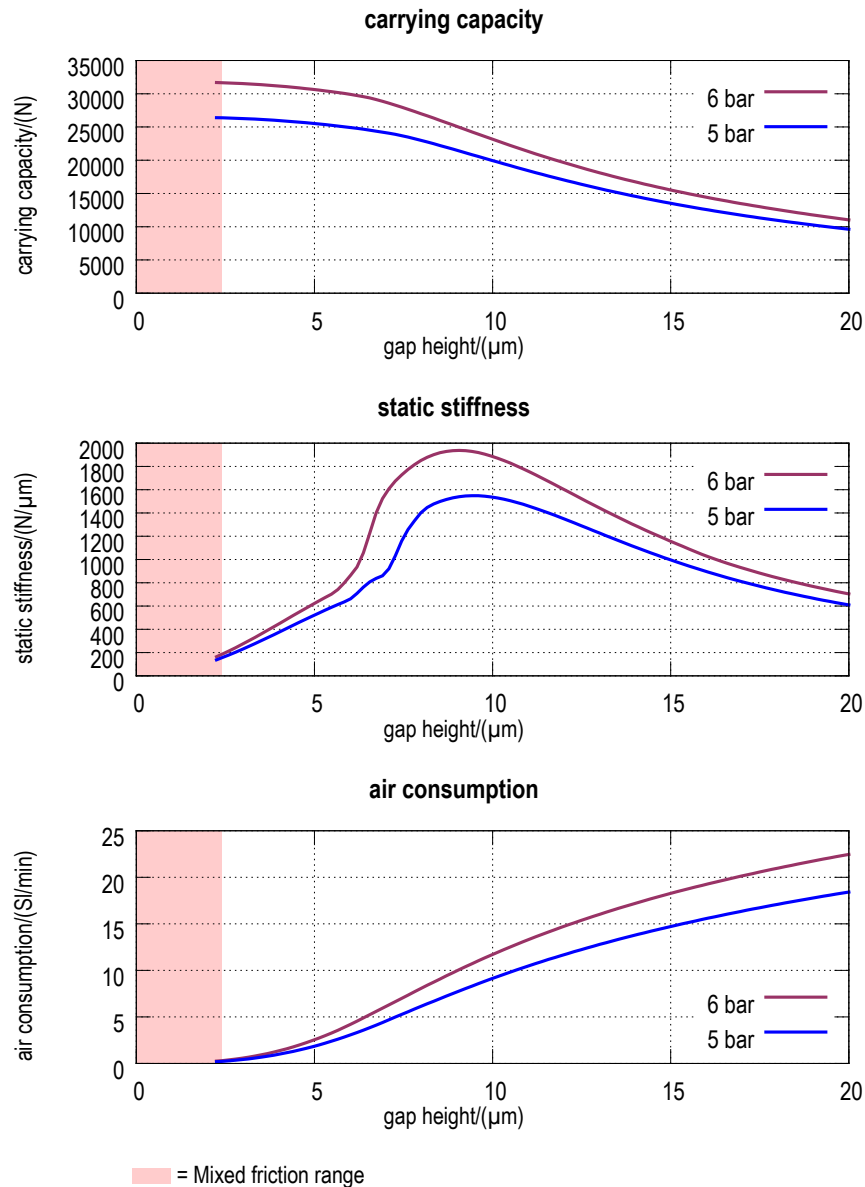
<sup>3\*</sup> at nominal carrying capacity

For specifications of guide surface, air quality requirements and gap definition see last pages of the [catalogue](#).

General information about design and function of our air bearings is available on our [website](#).

Status 08/2016

# EZ-0300-310 Air Bearing with Air Extraction



Additional air-extraction system.  
Thermodynamically optimised air cushion by micro groove system.<sup>1\*</sup>  
Bearing surface with dry running coating.

Air supply pressure <sup>2*</sup> / (bar <sub>rel</sub> )	5	6
Maximum carrying capacity / (N)	26300	31600
Nominal carrying capacity / (N)	16400	19000
Gap height <sup>3*</sup> / (μm)	12.4	12.4
Static stiffness <sup>3*</sup> / (N/μm)	1290	1530
Air consumption <sup>3*</sup> / (l/min)	12.1	15.3
Maximum velocity <sup>3*</sup> / (m/s)	5	6
Bearing weight (aluminium) / (g)	14159	
Air supply thread	G1/8"	
Adapted with centre screw	EZ-0249 M7x2.0-R50	

<sup>1\*</sup> Patents: US 6,164,827, DE 199 18 564 A1

<sup>2\*</sup> Different supply pressure on request

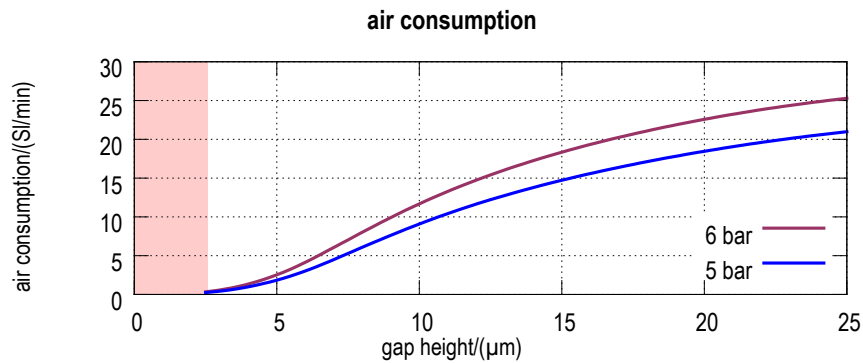
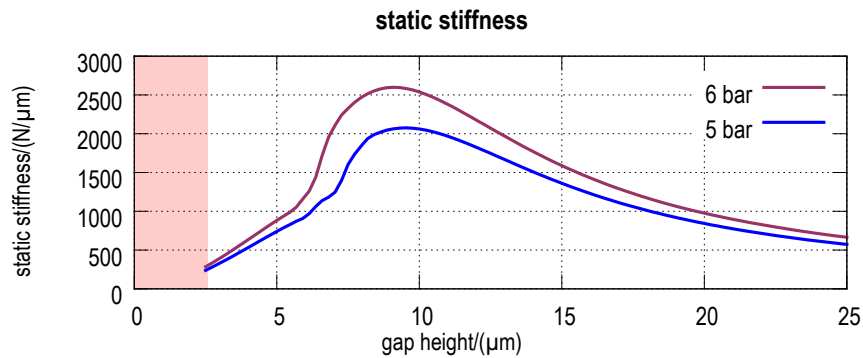
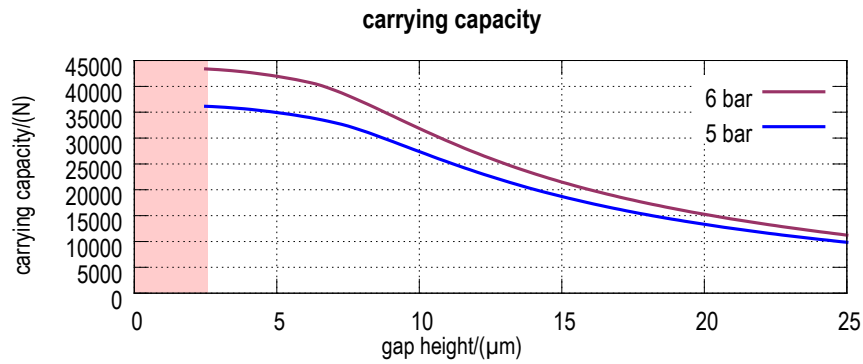
<sup>3\*</sup> at nominal carrying capacity

For specifications of guide surface, air quality requirements and gap definition see last pages of the [catalogue](#).

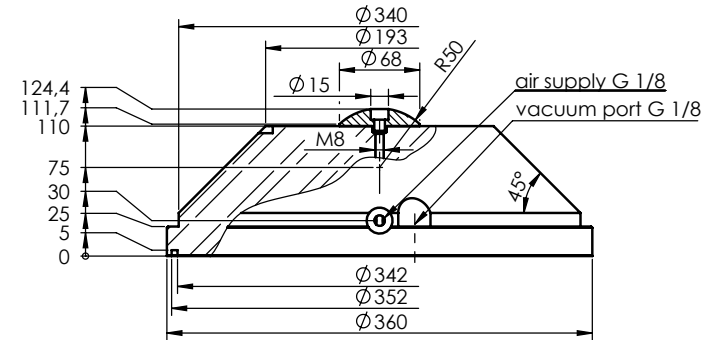
General information about design and function of our air bearings is available on our [website](#).

Status 08/2016

# EZ-0300-360 Air Bearing with Air Extraction



■ = Mixed friction range



Additional air-extraction system.  
Thermodynamically optimised air cushion by micro groove system.<sup>1\*</sup>  
Bearing surface with dry running coating.

Air supply pressure <sup>2*</sup> / (bar <sub>rel</sub> )	5	6
Maximum carrying capacity / (N)	36100	43300
Nominal carrying capacity / (N)	22400	25900
Gap height <sup>3*</sup> / (µm)	12.6	12.6
Static stiffness <sup>3*</sup> / (N/µm)	1730	2050
Air consumption <sup>3*</sup> / (l/min)	12.3	15.5
Maximum velocity <sup>3*</sup> / (m/s)	5	6
Bearing weight (aluminium) / (g)	22284	
Air supply thread	G1/8"	
Adapted with centre screw	EZ-0249 M7x2-R50	

<sup>1\*</sup> Patents: US 6,164,827, DE 199 18 564 A1

<sup>2\*</sup> Different supply pressure on request

<sup>3\*</sup> at nominal carrying capacity

For specifications of guide surface, air quality requirements and gap definition see last pages of the [catalogue](#).

General information about design and function of our air bearings is available on our [website](#).

Status 08/2016