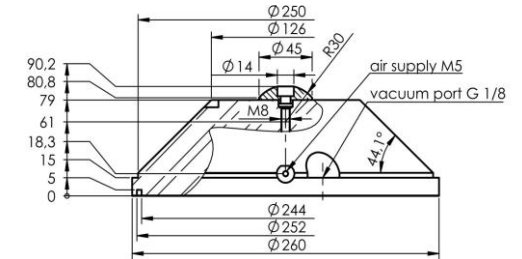


mixed friction range  5 bar — 6 bar —



Thermodynamically optimized air cushion due to micro groove system.<sup>1)</sup> Bearing surface with dry running coating. Clean room bearing with additional air-extraction system.

Air supply pressure <sup>2)</sup>	bar <sub>rel</sub>	5	6
Maximum carrying capacity	kN	18	21,5
Nominal carrying capacity	kN	10.5	12.0
Gap height <sup>3)</sup>	μm	12.3	12.3
Static stiffness <sup>3)</sup>	N/μm	900	1050
Air consumption <sup>3)</sup>	l/min	10	12.5
Maximum velocity <sup>3)</sup>	m/s	5	6
Weight	kg	7.8	7.8

Air supply thread M5  
Adapted with pressure screw EZ-0249 M48x1.5-R30

<sup>1)</sup> Patents: US 6,164,827, DE 199 18 564 A1

<sup>2)</sup> deviating supply pressures on request

<sup>3)</sup> at nominal carrying capacity

Visit our website for information on bearing design and function, counterface and air quality requirements, and the definition of gap height.

Subject to technical modifications and typographical errors.