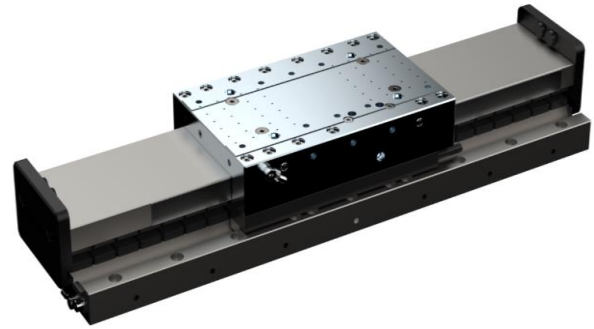


Key Features

- Slide 90 x 66 mm (l x w)
- Payload up to 4 kg
- Incremental Measuring System
- Dynamic Linear Motor
- High Positioning Accuracy
- Compact Design



Compact Air-Bearing Linear Axis

Concept and Design

Highly integrated construction and compact design make the axis versatile for high-precision positioning tasks with limited installation space.

Despite its compactness, the axis offers good load capacities and tilting moments. It can also be installed in upright position or lying on its side.

The linear axis is designed for small to medium-sized strokes with loads up to 30 N.

The hard-coated aluminum slide is dynamically driven by a Tecnotion UC3 motor. Preload is achieved by magnet groups.

The axis is equipped with an incremental measuring system from Heidenhain (LIK 21).

The rail (chrome steel) is available in 2 standard lengths, deviating lengths on request.

Applications

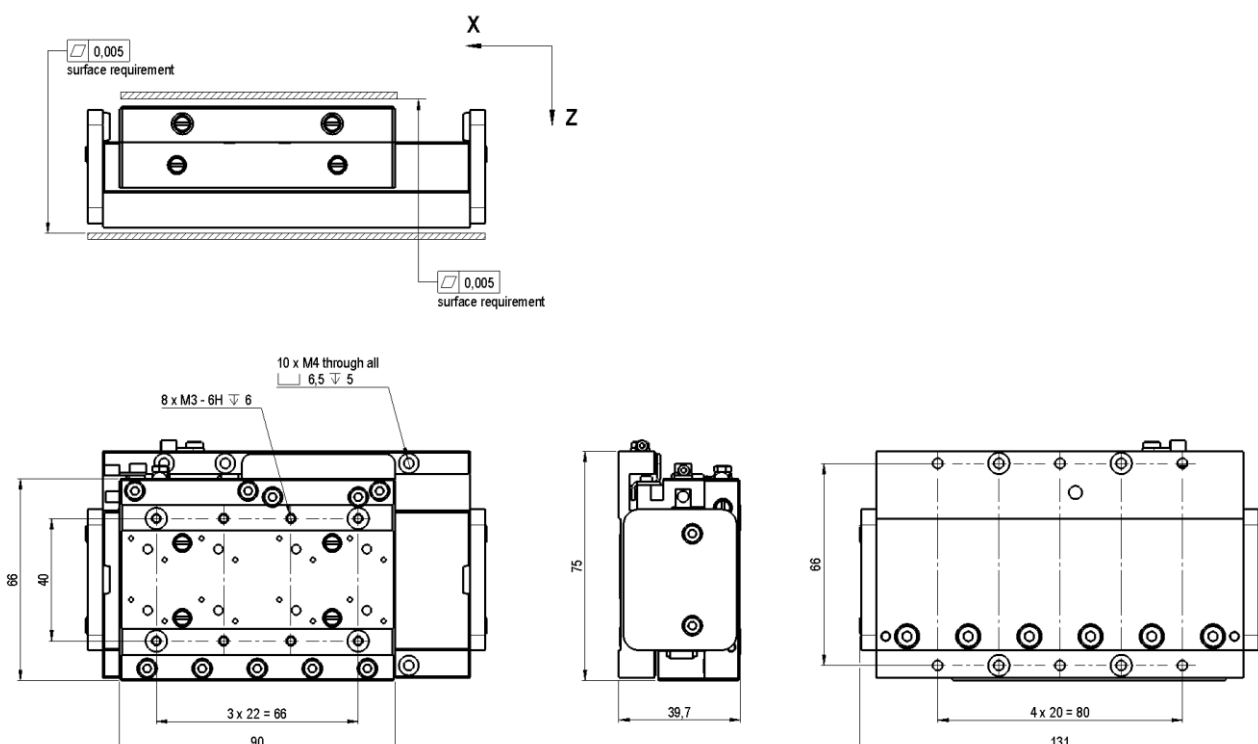
Inspection technology, non-contact 2D measurement, sensor and camera positioning for inspection, electronics and PCB manufacturing, AOI (automatic optical inspection), automation processes.

In general: applications with high demands on dynamics, precision, repeatability, smooth scan movements, short settling times.

Drive Control

We offer the linear axis EZ-2352-066 with the following drive controllers:

- Kollmorgen Servostar AKD / S300 / S700
- ACS Controller with UDMpa Drive
- Triamec TSD130



Specifications

Type	Unit	Stroke 20	Stroke 100
Stroke	mm	20	100
Positioning Accuracy uncompensated	µm	2	3
Repeatability (bidirectional) ¹⁾	nm	50	50
Position Stability ¹⁾	nm	30-100	30-100
Vertical/Horiz. Straightness (XTZ/XTY)	µm	1	3
Pitch (XRY)	µrad	10	25
Yaw (XRZ)	µrad	10	25
Max. Speed unloaded	m/s	2.5	2.5
Max. Acceleration unloaded	m/s ²	50	50
Mechanical Data	Unit	Stroke 20	Stroke 100
Mounting Position		unrestricted	unrestricted
Dimension LxWxH	mm	131x75x39.7	600x75x39.7
Max. Load ²⁾	kg	4	4
Load Capacity vertical (Z) push/pull	N	350	350
Load Capacity lateral (Y)	N	90	90
Moment of Tilt around Y	Nm	5	5
Moment of Tilt around X	Nm	1.5	1.5
Moment of Tilt around Z	Nm	1.5	1.5
Moving Mass (slide)	kg	0.4	0.4
Total Mass (incl. slide)	kg	1.6	2.4
Encoder		EZ-2352-66-xxx	
Type		incremental	
Sensor Signal		1Vpp / RS422	
Drive		EZ-2352-66-xxx	
Type		synchronous, ironless	
Intermediate Circuit Supply	V _{AC}	3-phase up to 45 (60 V _{DC})	
Continuous Force	N	8	
Peak Force	N	28	
Constant Current	A _{rms}	0.7	
Peak Current	A _{rms}	2.5	
Cable Length	m	1	
Interfaces and Environment		EZ-2352-66-xxx	
Air Consumption	Sl/min	9	
Supply Pressure	bar	5	
MTBF	h	> 20,000	
Limit Switch		without	
Clean Room Suitability		applicable	
Drive Control		EZ-2352-66-xxx	
Standard		Kollmorgen Servostar AKD / S300 / S700	
High End		ACS Controller; Triamec	

1) depending on drive control

2) large mass moments of inertia must be taken into account

Subject to technical modifications and typographical errors.