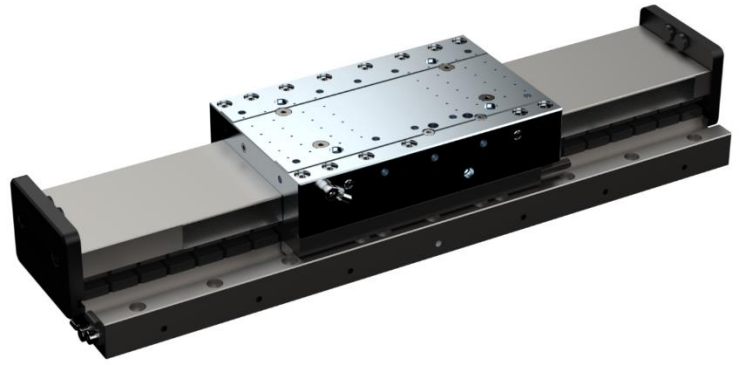
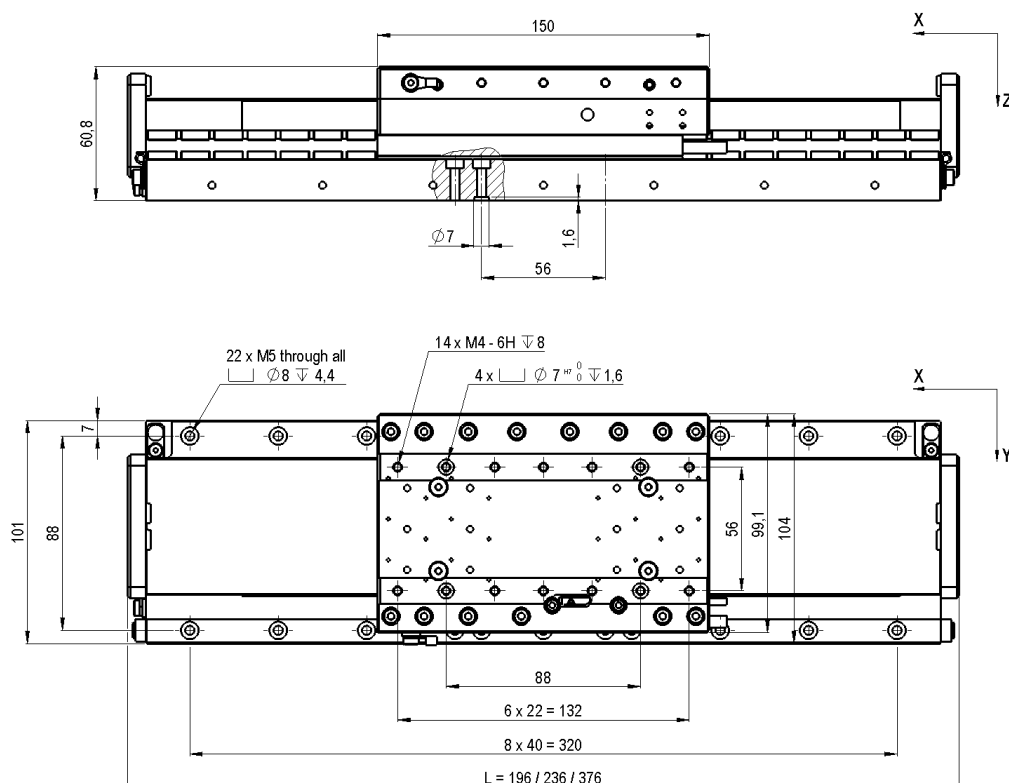


- Slide 150 x 99 mm (l x w)
- Payload up to 15 kg
- Absolute Measuring System
- Dynamic Linear Motor
- High Positioning Accuracy
- Compact Design
- Stackable



- Kollmorgen Servostar AKD / S300 / S700
- ACS Controller with UDMpa Drive
- Triamec TSD130



## Specifications

Type	Unit	Stroke 20	Stroke 60	Stroke 200
Stroke	mm	20	60	200
Positioning Accuracy	µm	2	2	3
Repeatability (bidirectional) <sup>1)</sup>	nm	50	50	50
Position Stability <sup>1)</sup>	nm	30-100	30-100	30-100
Vertical/Horiz. Straightness (XTZ/XTY)	µm	1	2	3
Pitch (XRY)	µrad	5	10	25
Yaw (XRZ)	µrad	5	10	25
Max. Speed unloaded	m/s	2	2	2
Max. Acceleration unloaded	m/s <sup>2</sup>	20	20	20
Mechanical Data	Unit	Stroke 20	Stroke 60	Stroke 200
Mounting Position		unrestricted	unrestricted	unrestricted
Dimension LxWxH	mm	196 x 104 x 60,3	236 x 104 x 60,3	376 x 104 x 60,8
Max. Load <sup>2)</sup>	kg	15	15	15
Load Capacity vertical (Z) push/pull	N	1,200/800	1,200/800	1,200/800
Load Capacity lateral (Y)	N	170	170	170
Moment of Tilt around Y	Nm	22	22	20
Moment of Tilt around X	Nm	7	7	6
Moment of Tilt around Z	Nm	5	5	5
Moving Mass (slide)	kg	1.3	1.3	1.3
Total Mass (incl. slide)	kg	5	7	10
Encoder			EZ-2352-94-xxx	
Type	absolute			
Signal	EnDat2.2			
Drive	Unit	EZ-2352-94-xxx		
Type	synchronous, ironless			
Intermediate Circuit Supply	V <sub>AC</sub>	3-phase up to 45 (60 V <sub>DC</sub> )		
Continuous Force	N	45		
Peak Force	N	160		
Constant Current	A <sub>rms</sub>	1.2		
Peak Current	A <sub>rms</sub>	8		
Cable Length	m	1		
Interfaces and Environment	Unit	EZ-2352-94-xxx		
Air Consumption	Sl/min	12		
Supply Pressure	bar	5		
MTBF	h	> 20,000		
Limit Switch	optional <sup>3)</sup>			
Clean Room Suitability	applicable			
Drive Control			EZ-2352-94-xxx	
Standard	Kollmorgen Servostar AKD / S300 / S700			
High End	ACS Controller, Triamec			

1) depending on drive control

2) large mass moments of inertia must be taken into account

3) type: Baumer IFFM 08P37A6/L (PNP normally closed)

Subject to technical modifications and typographical errors.