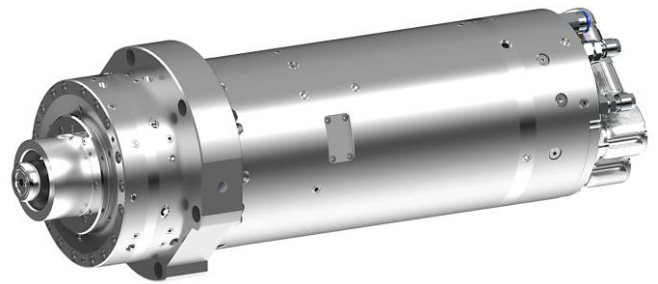


Key Features

- Diameter x Length 150 x 400 mm
- Max. Load Capacity radial 650 N
- Speed up to 20,000 rpm
- Fixture for Tool Holder HSK 50-C
- Water-Cooled Direct Drive



High Precision Air-Bearing Spindle EZ-9570

Concept and Design

The EZ-9570 air-bearing spindle is designed for high-precision grinding applications and reaches speeds of up to 20,000 rpm.

Due to the sealing air exiting via a labyrinth, it is also suitable for wet/lubricated production environments.

The synchronous motor is available in two versions: with a speed of max. 20,000 rpm at a torque of 2.6 Nm and with a speed of 12,000 rpm at a maximum torque of 3.2 Nm. Housing and rotor are water-cooled.

The standard version of the spindle is supplied either with flange mounting and centering collar or with an HSK 50-C clamping system. Other flange shapes and clamping systems are available on request.

Applications

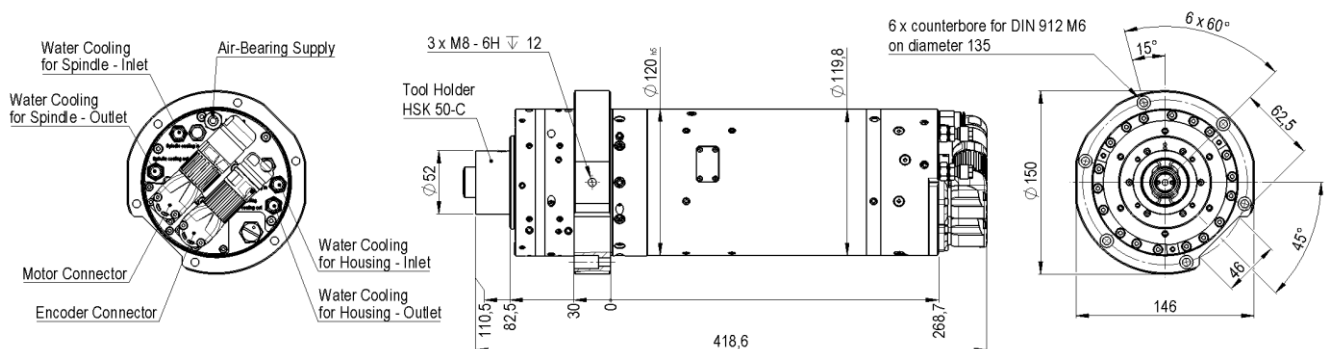
Precision and fine machining, turning of optical glasses and technical optics, glass milling, grinding/polishing of optical lenses and displays for cell phones and tablets, micro-machining of optical and medical products.

In general: For applications with high demands on dynamics and precision.

Drive Control

We offer the EZ-9570 spindle with the following controller:

- Kollmorgen AKD



Specifications

Type	Unit	HSK 50-C	Flange + Centering
Turning Range	°	> 360 (unlimited)	
Max. Speed	rpm	20,000	12,000
Error Motion axial	µm	0.1	
Error Motion radial	µm	0.2	
Mechanical Data	Unit	HSK 50-C	Flange + Centering
Diameter x Length	mm	150 x 400	
Weight	kg	28	
Max. Load Capacity axial push/pull	N	1,000	
Max. Load Capacity radial at spindle nose	N	650	
Stiffness axial	N/µm	110	
Max. Moment of Tilt	Nm	100	
Material Housing		1.4305 stainless steel	
Material Rotor		1.7131 case-hardened steel	
Drive	Unit	HSK 50-C	Flange + Centering
Type		synchronous motor	
Nominal Torque	Nm	2.6	3.2
Nominal Current	A	13.5	33
Voltage Intermediate Circuit	V _{DC}	560	120
Cooling for Motor/Air Bearing		water cooling	
Thermal Protection		1*PTC 130 °C	
Interfaces and Environment	Unit	HSK 50-C	Flange + Centering
Air Consumption	Sl/min	approx. 90	
Supply Pressure	bar	5	
Drive Control		HSK 50-C	Flange + Centering
Standard		Kollmorgen AKD	

Subject to technical modifications and typographical errors.